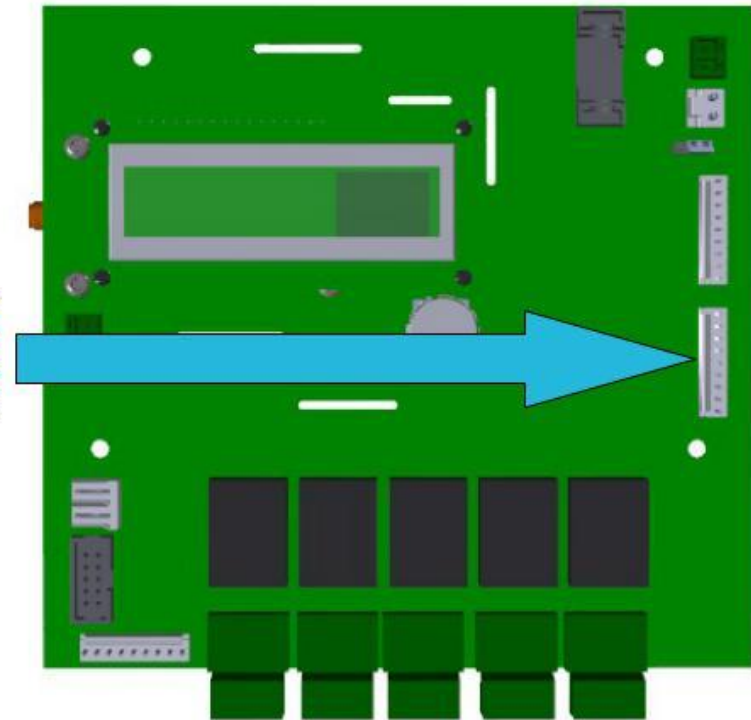
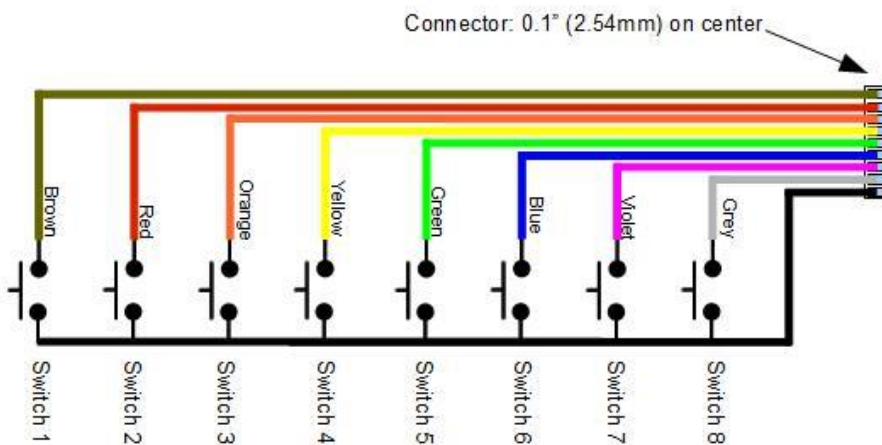


Example wiring method from input header to user switches with the RXC-3000



RXC-3000

Turn off ALL power before working on any electrical equipment.
Follow all applicable electrical and safety rules and regulations.
This is only an example. Your contactor and wiring may differ.
Electrical work should only be performed by licensed and qualified personnel.



In this example, remote switches are used to control the RXC-3000. The switches shown are momentary contact (press and release).

Notes:

- (1) Use dry contact closure switches or opto-isolated switches only.
- (2) Use the ground reference (PIN 9) from the RXC-3000 as the common for the switches. **NEVER CONNECT THE SWITCHES TO ANY OTHER VOLTAGE OR GROUND SOURCE OTHER THAN PIN 9 OF THE INPUT HEADER. YOU MIGHT DAMAGE THE RXC-3000.**
- (3) Keep the wires as short as possible.